

ETHOS 400x150 H 214

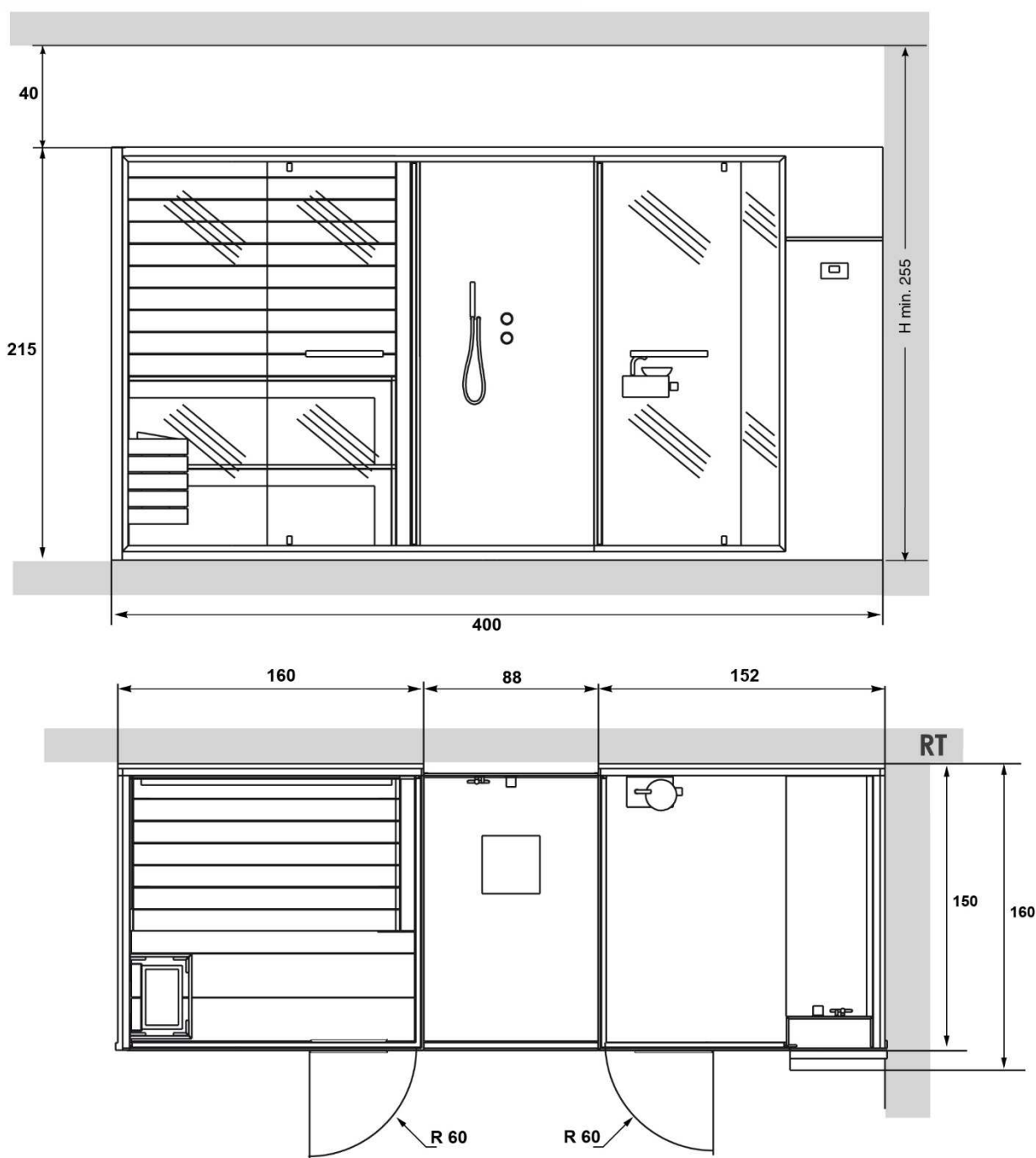
TURKISH BATH + SHOWER + SAUNA

RT VERSION

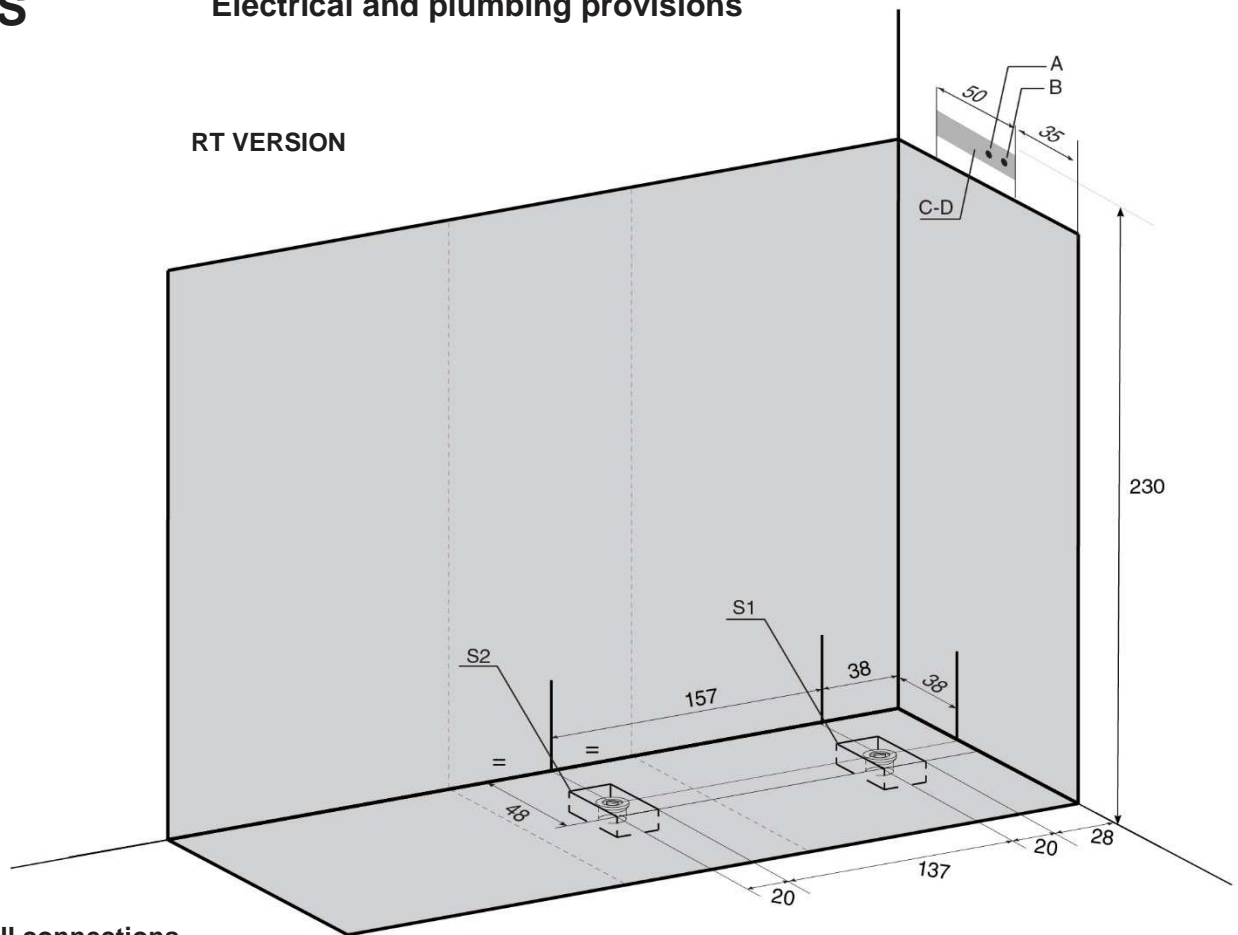
SAUNAVITA®
calore naturale



The overall dimension values are expressed in centimetres.
The actual dimensions may vary by ± 1 cm.



The minimum height of the wall tiles without protrusions is equal to the height of the stall.
On the walls there cannot be any greca or quarter round decorative patterns.



KEY

A-B- Water wall connections.

A - 1/2" F cold water wall connection.

B - 1/2" F hot water wall connection.

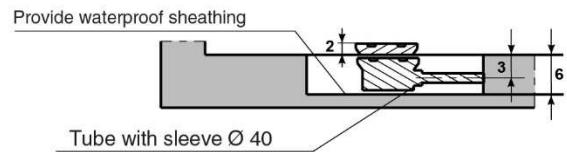
C-D- Electrical tube outlet.

C - Power cable outlet (SINGLE PHASE OR THREE PHASE).

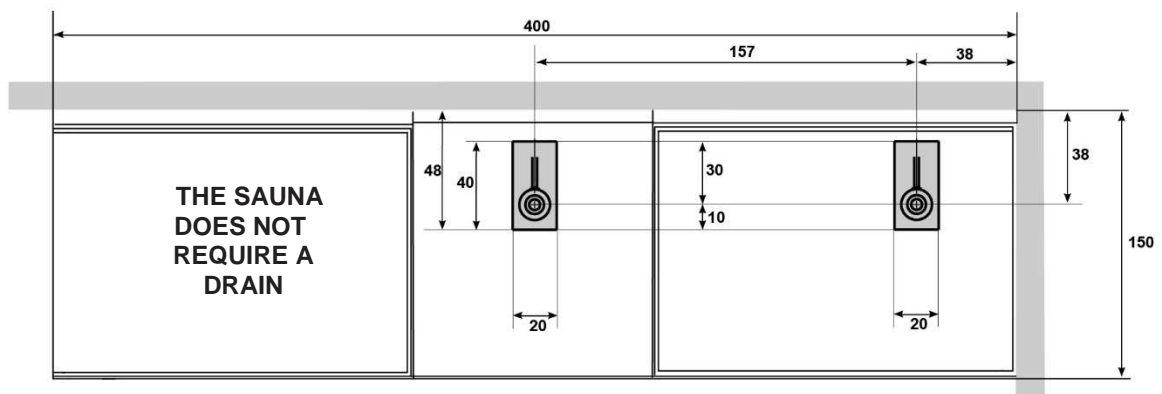
D - Equipotential cable outlet.

S1 - Turkish bath drain Ø 40mm.

S2 - Shower drain Ø 40mm.



| ELECTRICAL CHARACTERISTICS: | RESISTANCES | | | | | FUSE | MAXIMUM TEMPERATURE |
|-----------------------------|-------------|-------|----|-----|----|--------|---------------------|
| | | Volts | A | Kw | Hz | | |
| TURKISH BATH | 2x2000 W | 230 | 17 | 4 | 50 | 1x25 A | 50 °C |
| | | 400 | 10 | 4 | 50 | 2x16 A | |
| ELECTRICAL CHARACTERISTICS: | RESISTANCES | | | | | FUSE | MAXIMUM TEMPERATURE |
| | | Volts | A | Kw | Hz | | |
| SAUNA | 2x1800 W | 230 | 16 | 3.6 | 50 | 1x20 A | 100 °C |
| | | 400 | 8 | 3.6 | 50 | 2x16 A | |



SAUNA VITA srl reserves the right to make changes to products at any time without giving prior notice